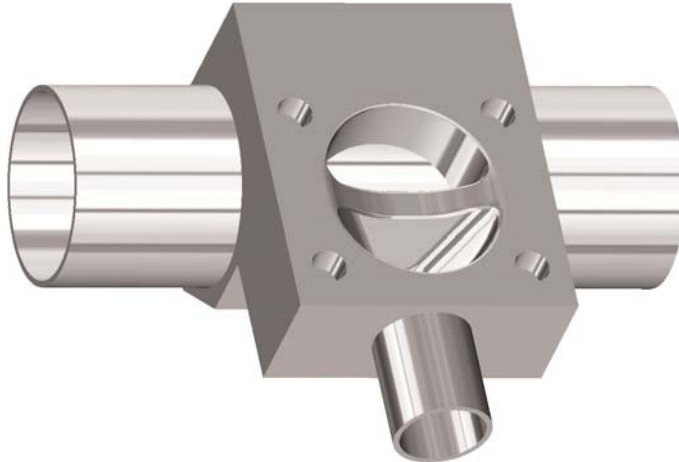


Close Coupled Branch Valve (CCBV)

HC4 Diaphragm Valves



HC4/030/01/11.02

The Saunders' CCB valve is a unique T-bodied diaphragm valve designed for flow diversions on critical pipework systems in the pharmaceutical and biotechnology industries.

The close coupled branch valve is engineered from a machined billet which allows for flexibility of specification on valve and tube combinations and also materials. The CCB valve provides a straight through unobstructive main line flow path and minimizes the deadleg normally associated with welding a conventional two way valve to a T-piece.

Close coupled branch valves are selected when the main process line is at least one size larger than the outlet branch and a reduction in bonnet or actuator size is required (e.g. 3" (DN80) main line with a ½" (DN15) outlet branch valve).

This valve option greatly assists the process design to meet cGMP requirements where it is important that valves are easily cleaned, sterilized and corners, crevices and deadlegs need to be avoided.

Materials

Stainless Steel 316L/1.4404/1.4435 plus other materials on request.

Surface finish (internal wetted area)

Standard : 0.5µm satin/0.25µm mirror

Special : 0.1µm supermirror

Standard electropolishing options

Diaphragms

Available with fully traceable range of Saunders FDA conforming diaphragms (EPM, butyl, PTFE)

Bonnets and actuators

Full range of bonnets available, including stainless steel sealed, non-sealed and Performance polymer options.

Compatible actuators include EC (slotted), ECX, ES complete with control options if required including switches, solenoids and positioners.

End Connections

- Butt weld
16 swg, ISO1127, DIN 11850, SMS
- Triclamp

CCBV Size Ranges

Branch Valve Size		Main Line Tube Size							
		0.75" (DN20)	1.00" (DN25)	1.50" (DN40)	2.00" (DN50)	2.50" (DN65)	3.00" (DN80)	4.00" (DN100)	6.00" (DN150)
in	mm								
0.50"	DN15	✓	✓	✓	✓	✓	✓	✓	✓
0.75"	DN20		✓	✓	✓	✓	✓	✓	✓
1.00"	DN25			✓	✓	✓	✓	✓	✓
1.50"	DN40				✓	✓	✓	✓	✓
2.00"	DN50					✓	✓	✓	✓
2.50"	DN65							✓	✓
3.00"	DN80							✓	✓
4.00"	DN100							✓	✓

CCBV Tube Specification

Tube Spec	Main Line Tube Size								
	0.25"	0.50"	1.00"	1.50"	2.00"	2.50"	3.00"	4.00"	6.00"
16 SWG	✓	✓	✓	✓	✓	✓	✓	✓	✓
Triclamp	✓	✓	✓	✓	✓	✓	✓	14 SWG	12 SWG
ISO 1127	✓	✓	✓	✓	✓	✓	✓	✓	✓
DIN 11850		✓	✓	✓	✓	✓	✓	✓	
SMS		✓	✓	✓	✓	✓	✓	✓	

For information on other options contact the technical sales department.

Crane Process Flow Technologies
 Saunders HC4 Products
 9860 Johnson Road
 Montgomery, Texas 77316
www.cranesaunders.com
 PH 936-588-4447
 Fax 936-588-8302