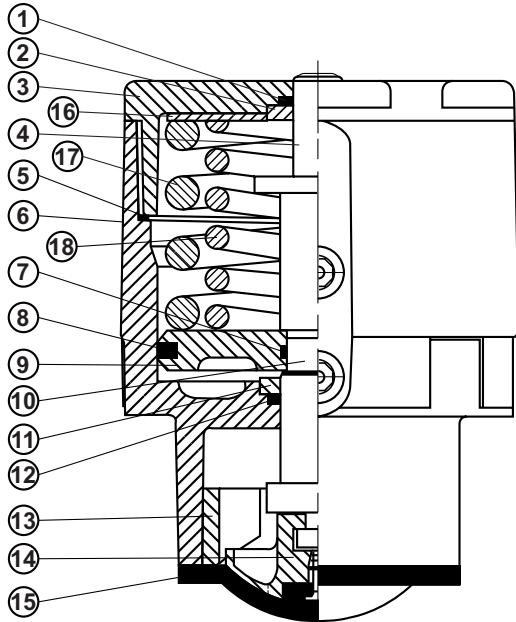
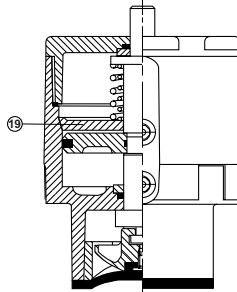


EC Actuators – Materials of Construction

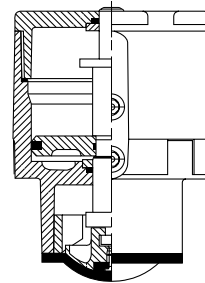
HC4 Diaphragm Valves



Spring Close EC Actuator



Spring Open EC Actuator



Double Acting EC Actuator

HC4/120/01/06.04

Item	Component	Spring Close	Spring Open	D Acting
1	Indicator Seal	Fluoroelastomer		
2	Cap Washer	PES (0.25" - 1.00") / IXEF (1.50" - 2.00")		
3	Cap	PES (0.25" - 1.00") / IXEF (1.50" - 2.00")		
4	Indicator	IXEF		
5	Bonnet/Cap o ring	Nitrile		
6	Bonnet	PES		
7	Piston inner seal	Nitrile		
8	Piston outer seal	Fluoroelastomer		
9	Piston	PES (0.25" - 1.00") / IXEF (1.50" - 2.00")		
10	Spindle	PES		
11	Bonnet washer	PES		
12	Spindle seal	Fluoroelastomer		
13	Bonnet insert	PES		
14	Compressor	Silicon Aluminium (0.50" - 2.00") Mild Steel (0.50" - 1.00") Mazak (0.25" - 0.38")		
15	Line diaphragm	Rubber / PTFE with rubber backing		
16	Loading Plate	Mild steel (1" - 2")	-	-
17	Outer Spring	Steel	Steel	-
18	Inner Spring	Steel (2" only)	Steel (2" only)	-
19	Spring support plate	-	PES	-

Crane Process Flow Technologies
 Saunders HC4 Products
 9860 Johnson Road
 Montgomery, Texas 77316
 www.cranesaunders.com
 PH 936-588-4447
 Fax 936-588-8302

CRANE 